

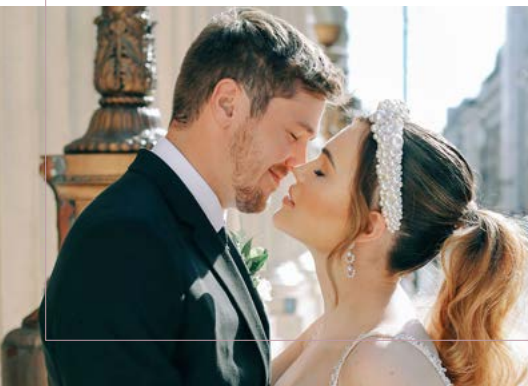
A detailed botanical illustration in white line art on a light purple background. The illustration features a variety of plants: large fan palms with distinct ribs, several types of ferns with intricate fronds, and several seed pods or fruits on stems. The plants are arranged in a circular pattern around a central diamond-shaped area.

116  
PALL MALL

An unforgettable  
day in an  
extraordinary  
setting

## 116 Pall Mall is one of London's most majestic wedding venues

With a range of stunning spaces and exclusive hire of the building on weekends, 116 Pall Mall is the perfect venue for your wedding ceremony or civil partnership. Originally designed by John Nash, the architect behind Marble Arch and Brighton Pavilion, it dates from the early 1820s and is Grade I listed.



Located in the heart of St James's and built on the site of a former Royal palace, 116 Pall Mall offers a glamorous and breath-taking setting, moments from London's most iconic landmarks, such as Trafalgar Square, St James's Park and Buckingham Palace.

With original features throughout the building, you won't miss the glittering 15ft handmade Regency chandelier above the main staircase, which was a gift from George IV to commemorate the Battle of Waterloo. Our spectacular staircase has seen many couples marry on its steps, with loved ones looking on from the balcony above.

In recent years *Downton Abbey* has been filmed in the building, as have scenes in *The Dark Knight*, *Gandhi* and *Foyle's War*. Even *James Bond* author Ian Fleming was a regular diner at 116 Pall Mall.

All of our rooms, including our beautiful staircase, are licensed to hold ceremonies. To book your date and time, please contact Westminster Registry Office via [A Day To Remember](#)

Please note, there are separate charges for the registry office to marry you.

LEFT  
COUPLE ON  
PALL MALL

MIDDLE  
116 PALL MALL  
MAIN ENTRANCE

ABOVE  
THE GRAND  
STAIRCASE  
©ANDY GRIFFIN





## Our spaces

---

You'll be spoilt for choice with our wide range of spaces. Spanned over 3 floors, each room has its own unique charm.

We offer everything from multiple room hire to exclusive use of the entire building at weekends, catering to civil ceremonies, Asian and Jewish weddings and everything in between. Our rooms vary from intimate receptions to large celebrations that carry on into the night with great photo opportunities in every room.

ABOVE  
FLORAL DETAILING

RIGHT  
BREAKFAST IN THE  
MORNING ROOM

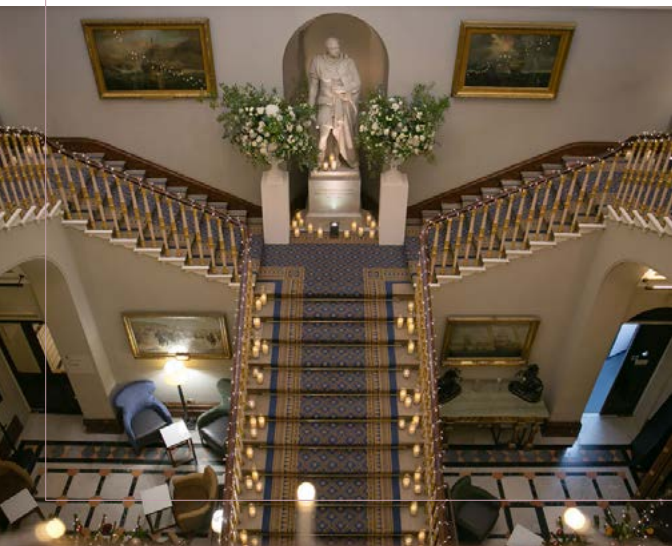
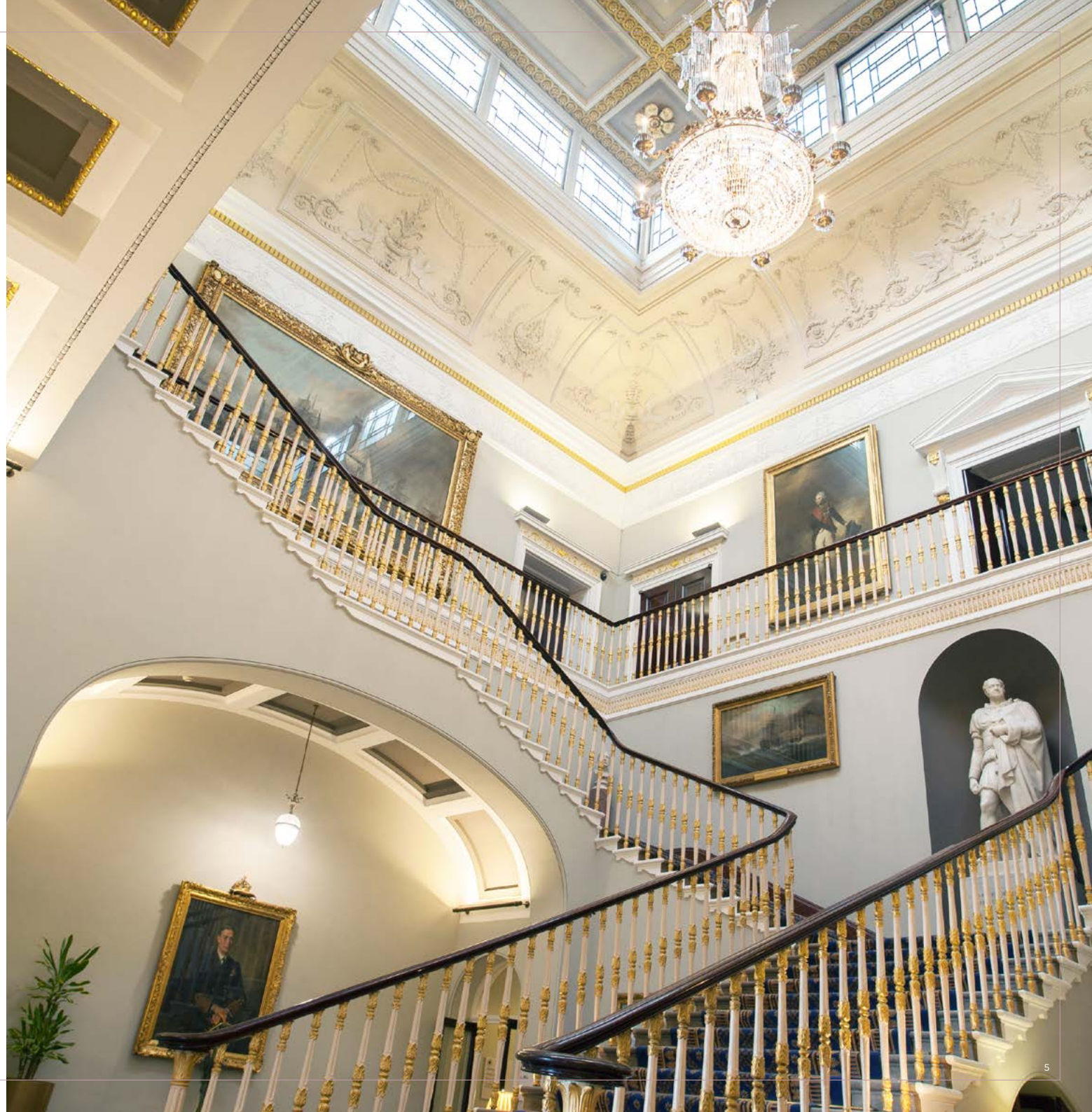


# The Grand Staircase & Balcony

Start a new chapter of your lives on the grand staircase, under a 15ft Regency chandelier. Hold your ceremony here with all your guests watching from the grand balcony and take photos that will hold those memories forever.

RIGHT  
THE GRAND STAIRCASE AND  
VIEWING BALCONY

BELOW  
CEREMONY SETTING ON THE GRAND  
STAIRCASE ©JOHN NASSARI



## The Nash & The Waterloo

Named in honour of the architect John Nash, who designed 116 Pall Mall in the 1820s, the Nash is one of London's most beautiful event rooms. Luxurious in style and steeped in grandeur. Wed and dine amongst portraits of the royals and step out onto the balcony to enjoy the views.

The Waterloo room overlooks the iconic Pall Mall, with stunning Georgian architecture and floor to ceiling windows – the room comes alive as night falls. Perfect for drinks receptions and ceremonies, the Waterloo is one of our most popular rooms for intimate gatherings.

RIGHT  
RECEPTION UNDER  
THE GLITTERING  
CHANDELIER

BELOW  
DECORATED MANTLE  
IN THE WATERLOO







## The Carlton & Directors Room

---

The Carlton is richly decorated with dramatic Ionic columns finished in marble-esque scagliola and walls lavishly covered in gold leaf on linen, adding a real sense of glamour and opulence to the room. The Carlton provides a luxurious setting with access to our private terrace – just beautiful for a summer evening.

The Directors Room is one of our biggest spaces, it offers flexibility and charm with a truly original setting for your wedding reception. With floor to ceiling windows looking directly out onto the iconic Pall Mall, this room is bright and airy with excellent views.

LEFT  
WEDDING BREAKFAST  
IN THE CARLTON ROOM

BELOW  
THE DIRECTORS ROOM





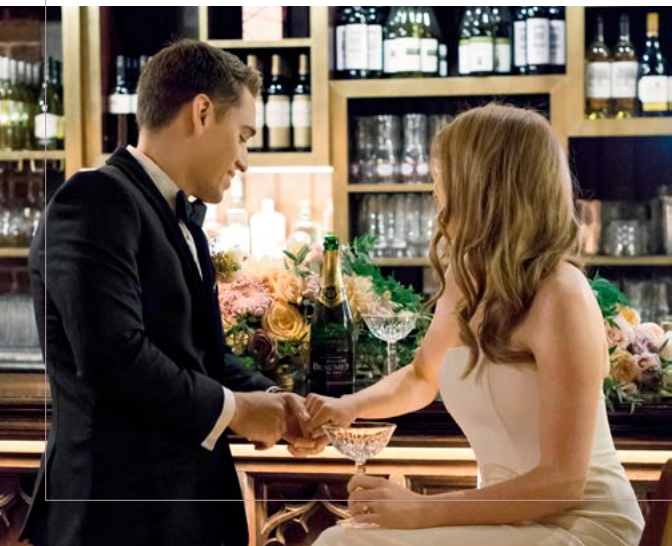
# The Champagne Bar

---

End your evening in our Champagne Bar - vaulted ceilings, exposed brickwork and the buildings original cellar doors. With an annex joined to the bar, this room is perfect for entertaining and socialising. Add this onto your package and dance the night away together.

RIGHT  
CHAMPAGNE RECEPTION

BELOW  
THE CHAMPAGNE BAR



## Piccadilly package

---

- Venue hire from 12pm – 12am
- Ceremony room
- Arrival drink
- Three course fine dining meal
- Half a bottle of wine with the meal
- Tea, coffee, petit fours & water
- Prosecco toast
- Dancefloor
- Dedicated wedding planner
- Menu tasting for the wedding couple
- Cake table & knife
- In house furniture
- White linen table cloths & white linen napkins
- Cloakroom & security

Based on a minimum of 100 guests



## Pall Mall package

---

- Venue hire from 12pm – 12am
- Ceremony room
- Two glasses of Prosecco
- Three canapés
- Three course fine dining meal
- Half a bottle of wine with the meal
- Tea, coffee, petit fours & water
- Champagne toast
- Dancefloor
- PA system & mic
- Dedicated wedding planner
- Menu tasting for the wedding couple
- Cake table & knife
- In house furniture
- White linen table cloths & white linen napkins
- Cloakroom & security

LEFT  
WEDDING BREAKFAST IN THE  
CHAMPAGNE BAR ANNEXE

# Waterloo package

---

- Venue hire from 12pm – 12am
- Ceremony room
- Chivari chairs
- Two glasses of Champagne
- Three canapés
- Three course fine dining meal
- Half a bottle of wine with the meal
- Tea, coffee, petit fours & water
- Champagne toast
- Cheese Station
- Dancefloor
- PA system & mic
- Dedicated wedding planner
- Menu tasting for the wedding couple
- Cake table & knife
- In house furniture
- White linen table cloths & white linen napkins
- Cloakroom & security

Based on a minimum of 100 guests



THE GRAND STAIRCASE

# Catering

Every wedding is a unique reflection of the soon-to-be-married couple.

With over 175 years of catering for everyone from royalty to intimate weddings, Searcys - our official caterer, is famed for making delicious, honest food perfect for any size celebration.

Our ethos is quality-led, seasonal, and unashamedly classic, inspired by the best of British cuisine and punctuated with a modern culinary flair.

EST-1847  
**SEARCYS**  
LONDON



## SAMPLE MENU

Goat cheese, orange and fennel salad, roasted pine nuts

Twice baked cheese soufflé, candy walnuts, apple and chicory salad

Roast pork medallion, savoy cabbage, carrot puree, crispy skin, apple cider glaze

Wild mushroom and truffle risotto, Tunworth cheese, rucola leaves

Flourless chocolate torte, rum soaked raisin, clotted cream, mint

Spiced pineapple carpaccio, lime cream and forest fruit sorbet (ve)



FAR LEFT  
FINE DINING DISH  
ON SEARCYS  
SIGNATURE BONE  
CHINA

MIDDLE  
TABLE SETTING IN  
THE CARLTON TO  
SUIT YOUR THEME

TOP  
THE BEST OF  
BRITISH CUISINE  
AND PUNCTUATED  
WITH A MODERN  
CULINARY FLAIR



## Package upgrades

---

Whilst our packages help you take the stress out of planning your big day, we strongly believe every wedding is as unique as each union.

Some additional extras you may like to add to your package include:

- Access to the Terrace
- Chivari chairs
- Two hour bar
- Canapés
- Add an extra course to your meal
- Upgraded wine
- Upgrade to champagne toast
- Evening snacks
- Book our DJ
- Extend your evening to 1am
- Book the Champagne Bar for evening entertainment

RIGHT  
EVENING RECEPTION  
IN THE NASH



## Dry hire

---

For those couples who would like to keep tradition in their big day, dry hire is also an option at 116 Pall Mall.

For all Asian wedding catering, Blackstone Caterers London are established, talented, and dynamic Asian wedding caterers. With a reputation for producing and catering premium Asian weddings and events. Please get in touch with them directly to enquire – [info@blackstonecaterers.co.uk](mailto:info@blackstonecaterers.co.uk) 020 3500 0988.

BELOW  
WEDDING BREAKFAST IN THE NASH  
©KRISTIAN LEVEN PHOTOGRAPHY

MIDDLE  
THE FINER DETAILS TAILORED TO THE COUPLE  
©KRISTIAN LEVEN PHOTOGRAPHY



This includes the following:

- Venue access
- Terrace access
- Use of our tables and chairs
- Access to the kitchen
- Corkage
- Security and cleaning
- Cloakroom
- A House Manager and KP on the day to liaise with

ABOVE  
CEREMONY IN THE NASH  
©KRISTIAN LEVEN PHOTOGRAPHY

---

Please note, no staff members are included for service of food and beverage. Catering suppliers must provide their own cutlery, plates, glass ware and serving staff.



116 PALL MALL, LONDON SW1Y 5ED

020 3814 7592 | [INFO@116PALLMALL.COM](mailto:INFO@116PALLMALL.COM)

[116PALLMALL.COM/WEDDINGS](http://116PALLMALL.COM/WEDDINGS)

